



4 Jasmine Court, Organford Manor, Organford, BH16 6FJ

Asking Price £195,000

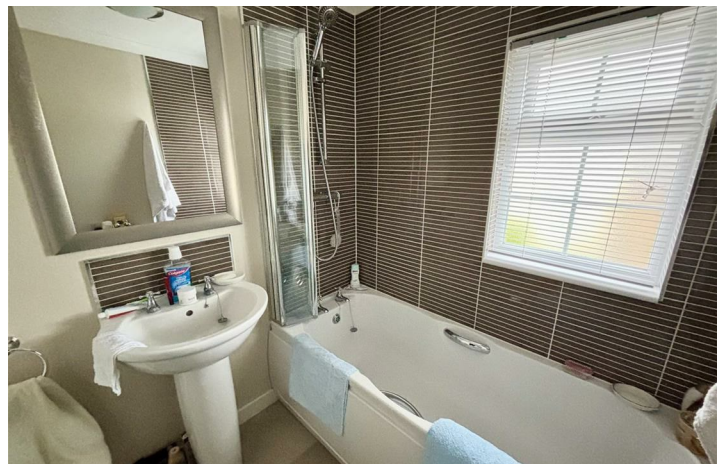
- Two Double Bedrooms
- Omar Middleton
- Immaculate Throughout
- Low Maintenance Garden
- UPVC Double Glazing
- Residential Park Home
- Measuring 40x20ft
- Off-Road Parking
- Gas Central Heating
- No Forward Chain

Organford Manor Country Park , Poole BH16 6FJ

NO FORWARD CHAIN! A very well presented, two double bedroom park home situated within the newer section of Organford Manor Park - a dog friendly site for the over 45's.



Council Tax Band: A



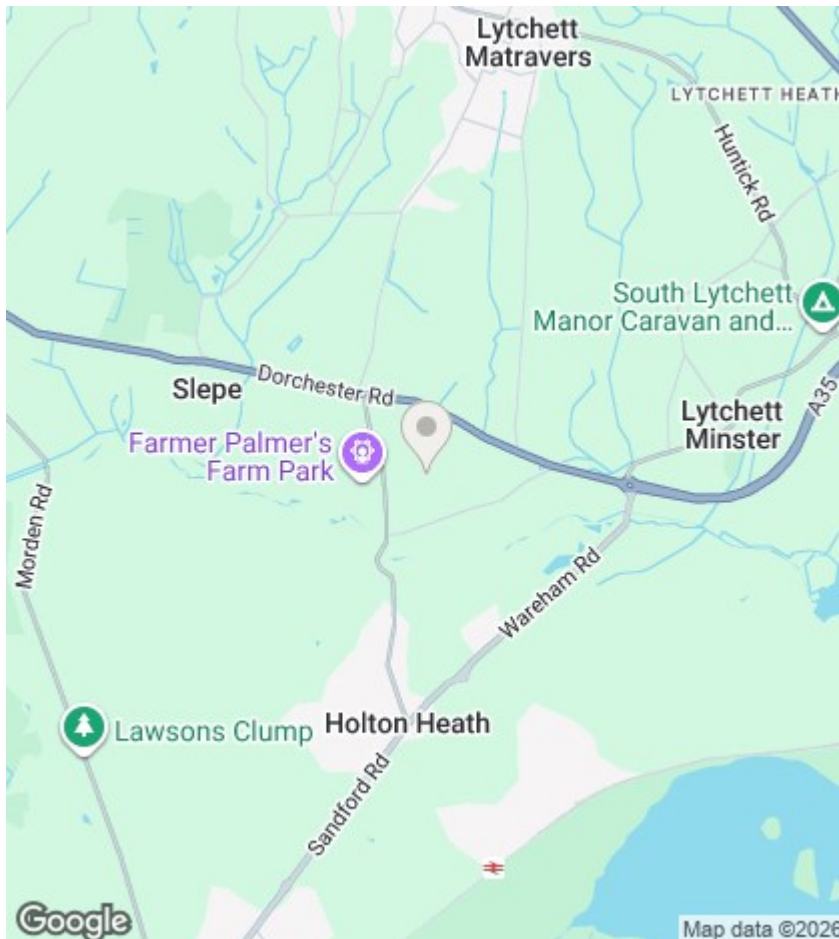
Jasmine Court

This Omar Middleton unit measure 40x20ft and briefly comprises: two double bedrooms, a bright & airy living room, well appointed kitchen and family bathroom.

Further benefits include off-road parking for one car, a wrap around garden, UPVC double glazing and gas central heating.

Sited in 2016, this property is positioned within the newer part of the park and is just a short walk from the dedicated dog field.

Offered for sale with onward chain, internal viewing is encouraged to appreciate the 'near new' feel of the home. To arrange, or for more information, please call our Upton Branch.



Agents Note

Whilst every attempt has been made to ensure the accuracy of details and measurements contained in these particulars, they are not to be relied upon especially when potential cost could be incurred.

No appliances have been tested so the agent cannot verify that they are in working order. The agent has not seen any legal documentation to verify the legal status of the property. This must be verified by your chosen solicitor.

Viewings

Viewings by arrangement only. Call 01202 622101 to make an appointment.

EPC Rating:

Energy Efficiency Rating		
	Current	Potential
Very energy efficient - lower running costs		
(92 plus) A		
(81-91) B		
(69-80) C		
(55-68) D		
(39-54) E		
(21-38) F		
(1-20) G		
Not energy efficient - higher running costs		
England & Wales	EU Directive 2002/91/EC	

